

Versuche zur Vorlesung Physik für Maschinenbau

Vorlesung 11

Dr. Thomas Kirn



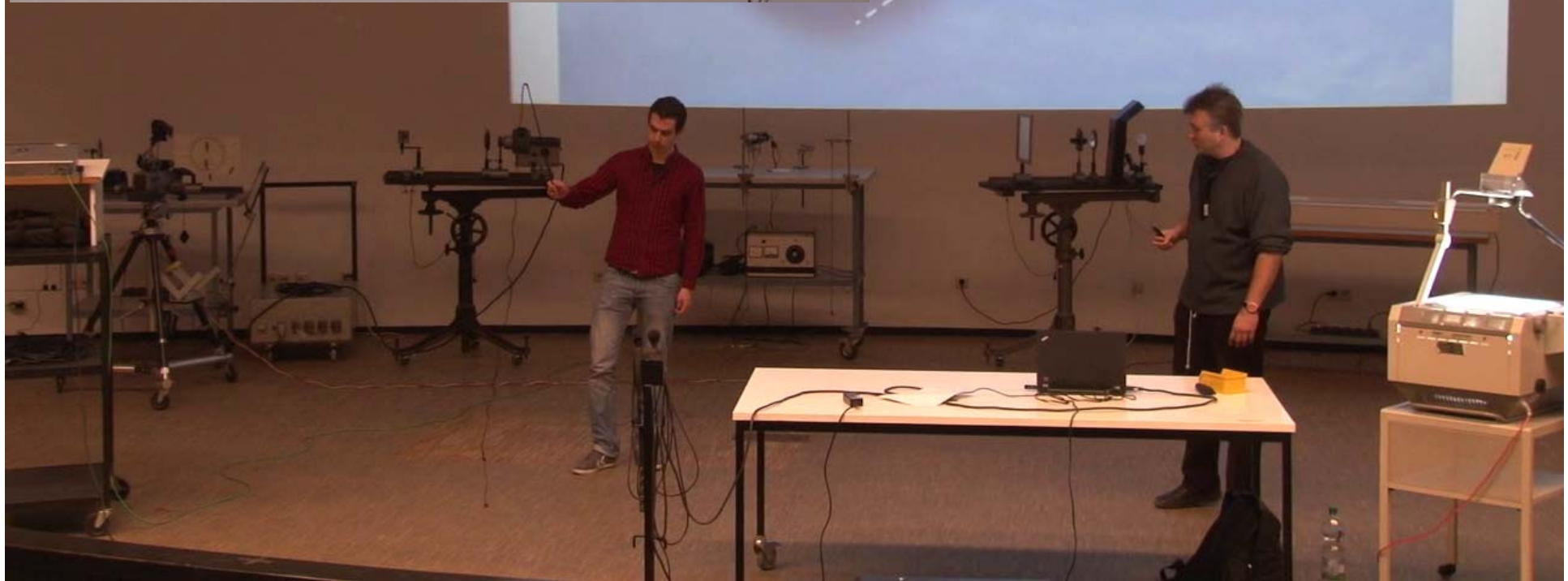
Dopplereffekt, Peitschenknall



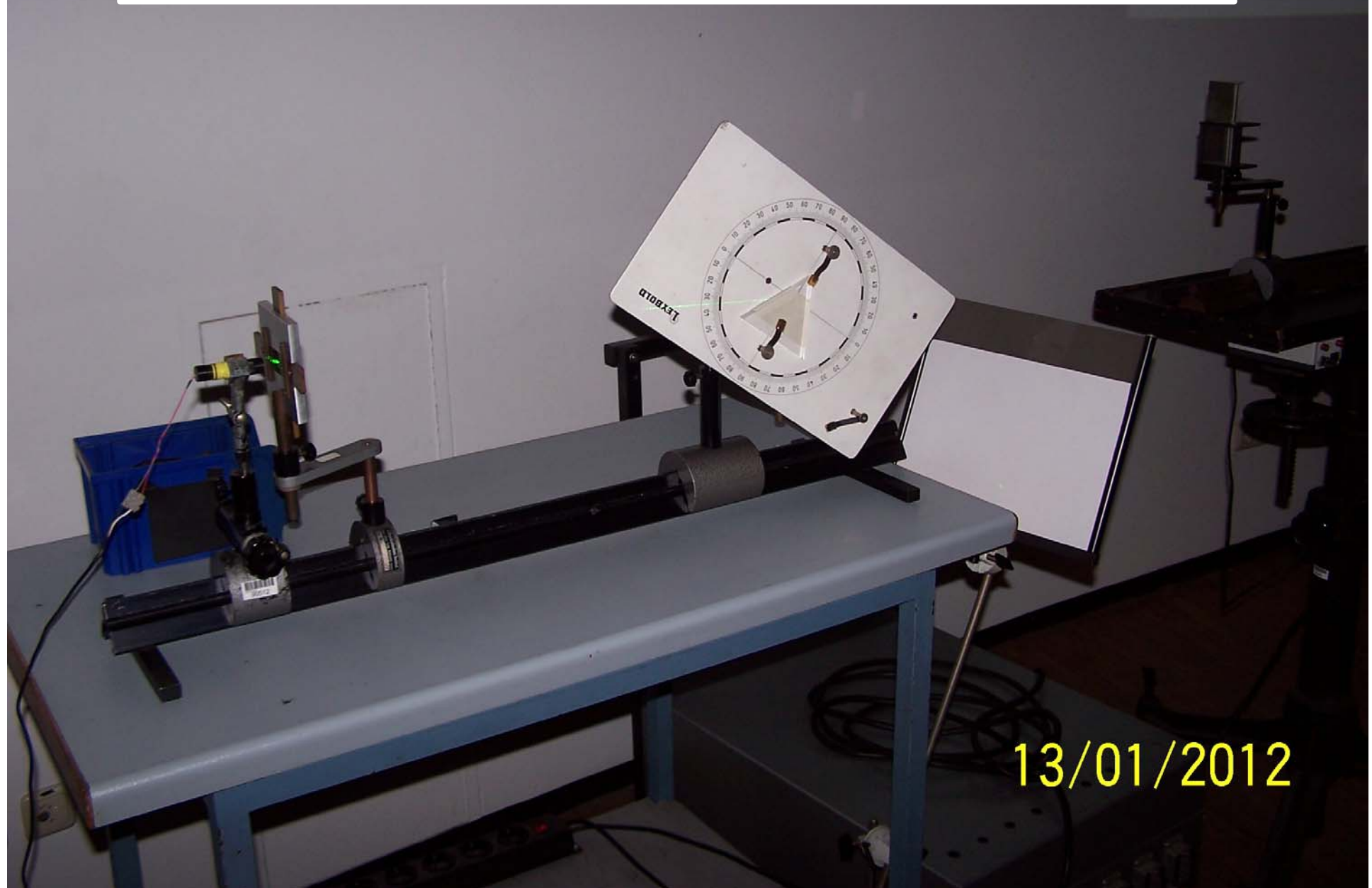
$$E_{kin} = \frac{1}{2} m v^2$$

$$m \rightarrow 0$$

$$v \rightarrow \infty$$



Optik, Strahlengang Prisma, Minimalablenkung



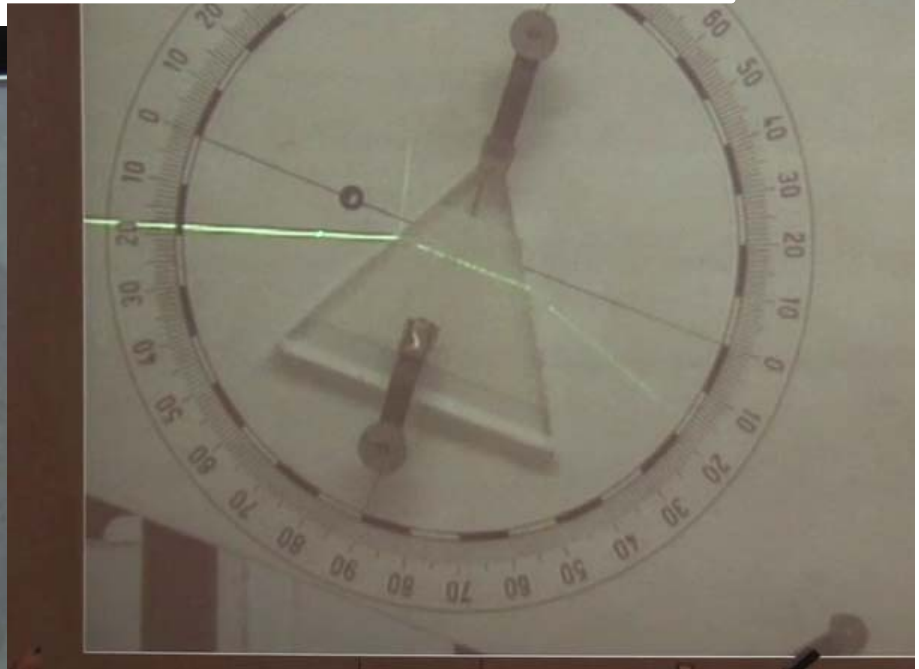
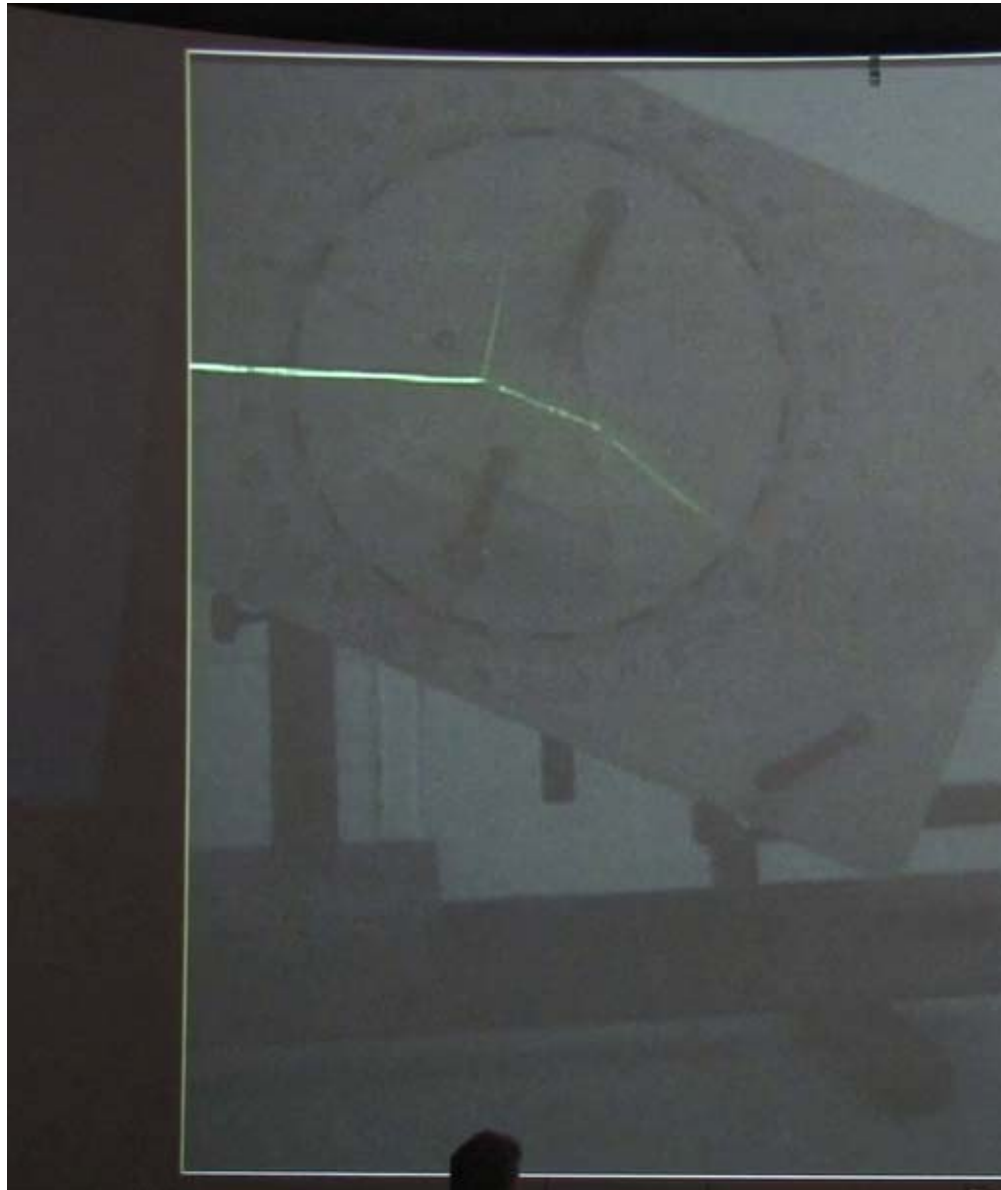
13/01/2012

Optik, Strahlengang Prisma, Minimalablenkung



13/01/2012

Optik, Strahlengang Prisma, Minimalablenkung



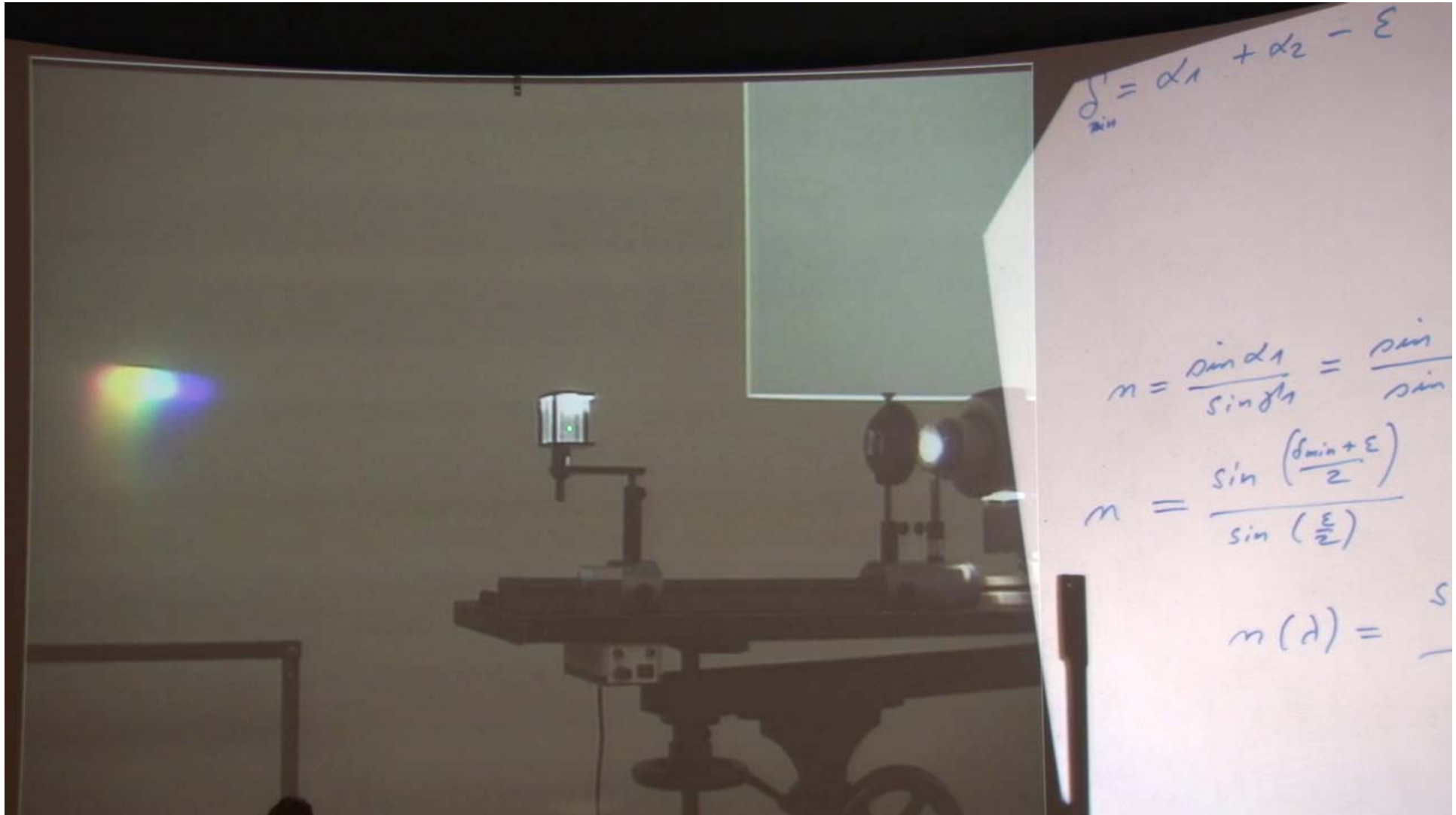
Optik, Strahlengang Prisma, Dispersion



Optik, Strahlengang Prisma, Dispersion



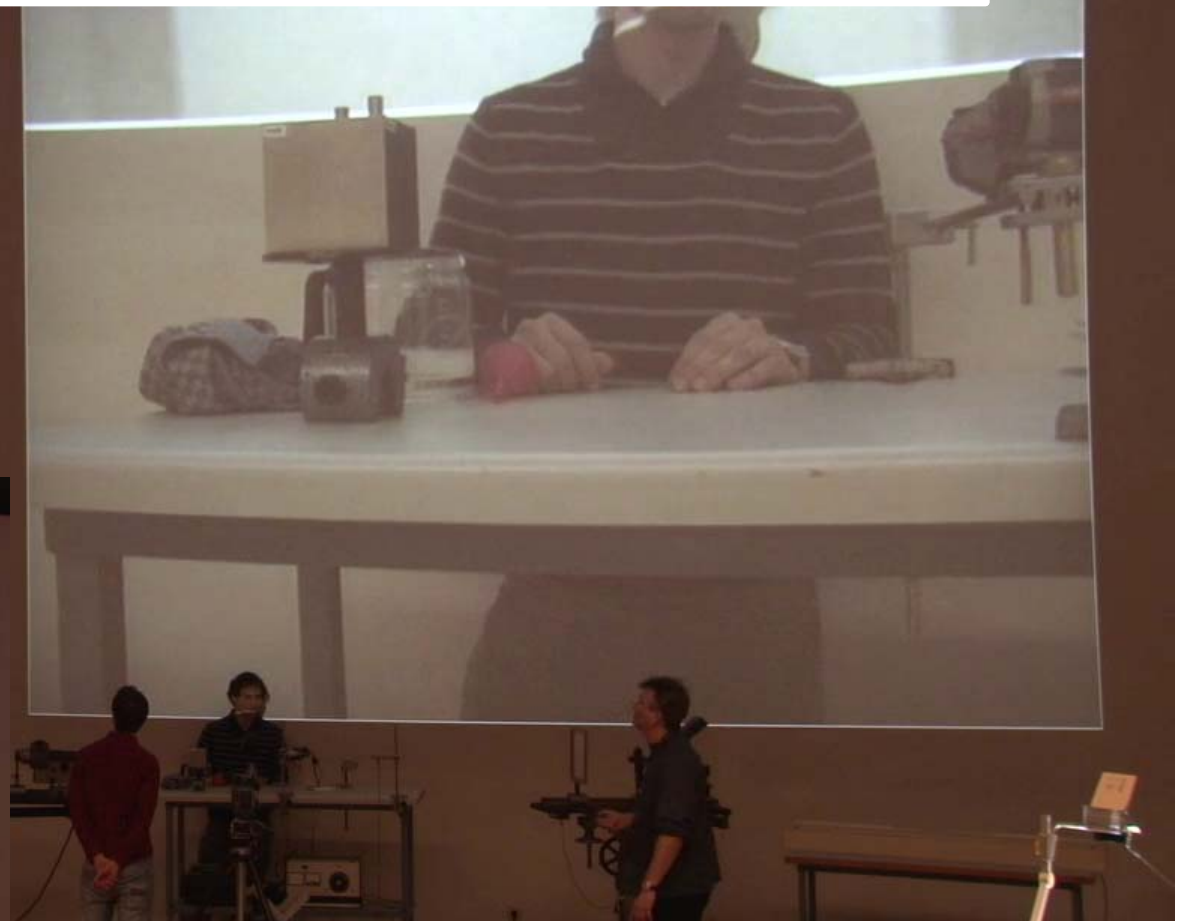
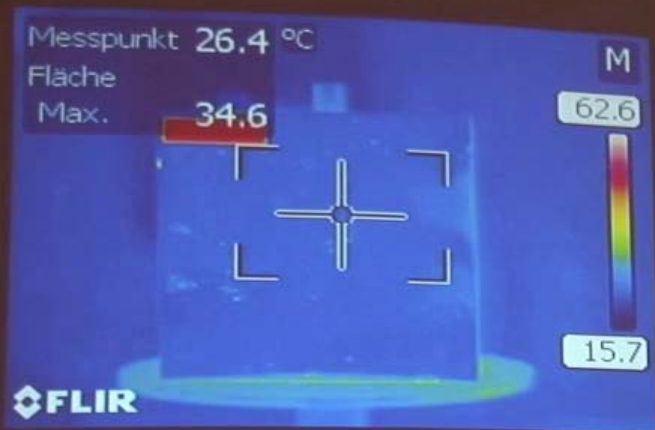
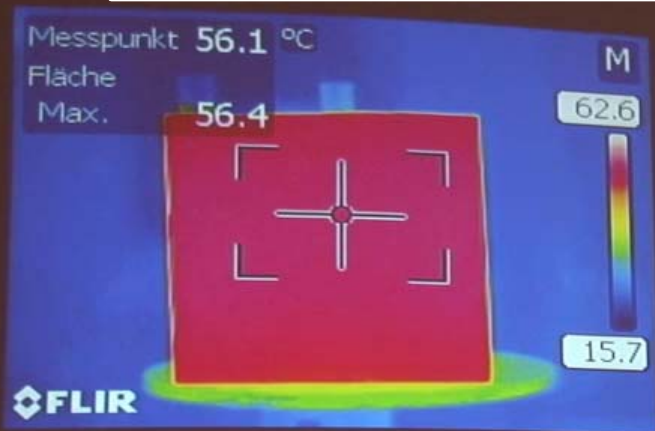
Optik, Strahlengang Prisma, Dispersion



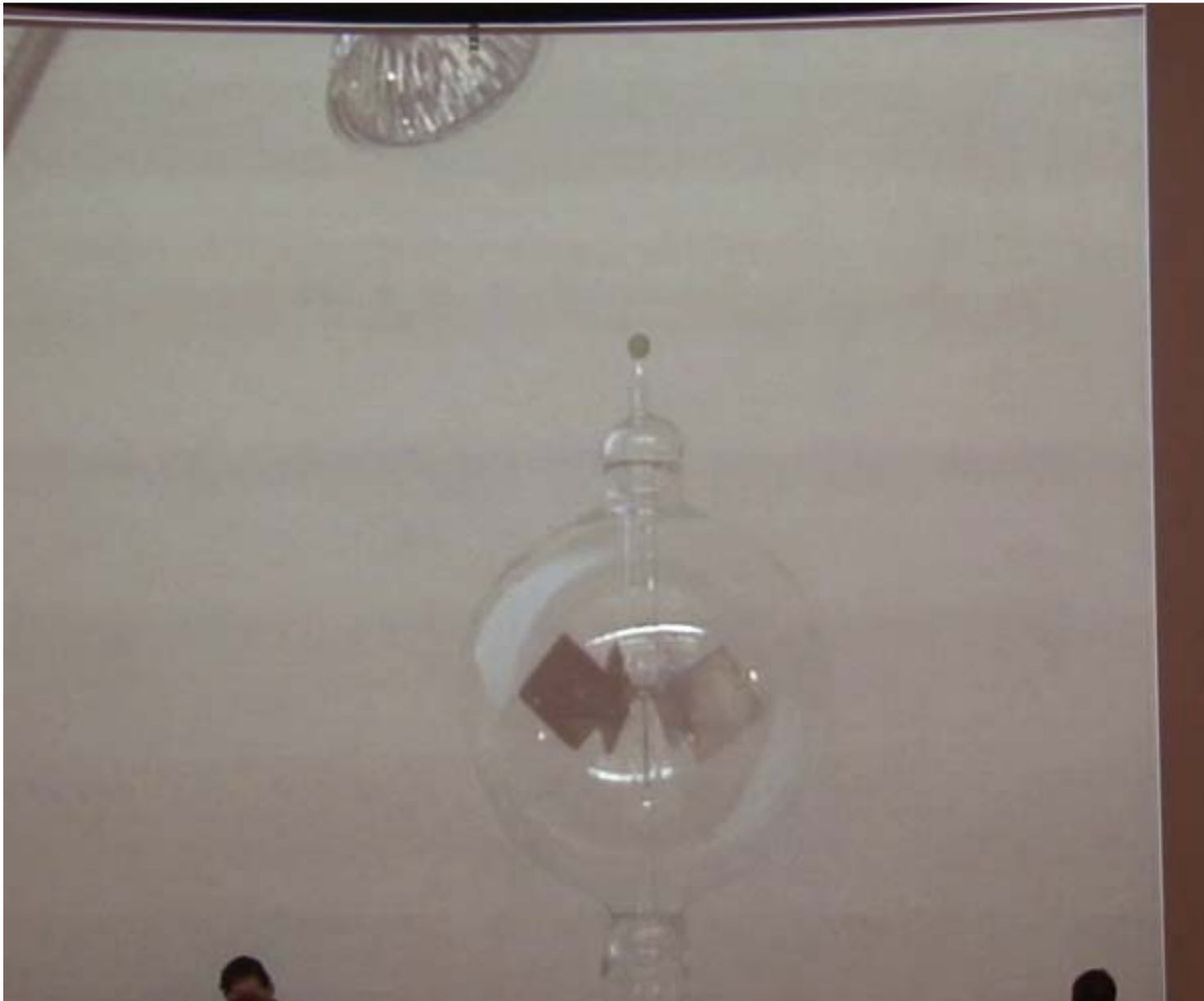
Lichterzeugung, Wärmestrahlung



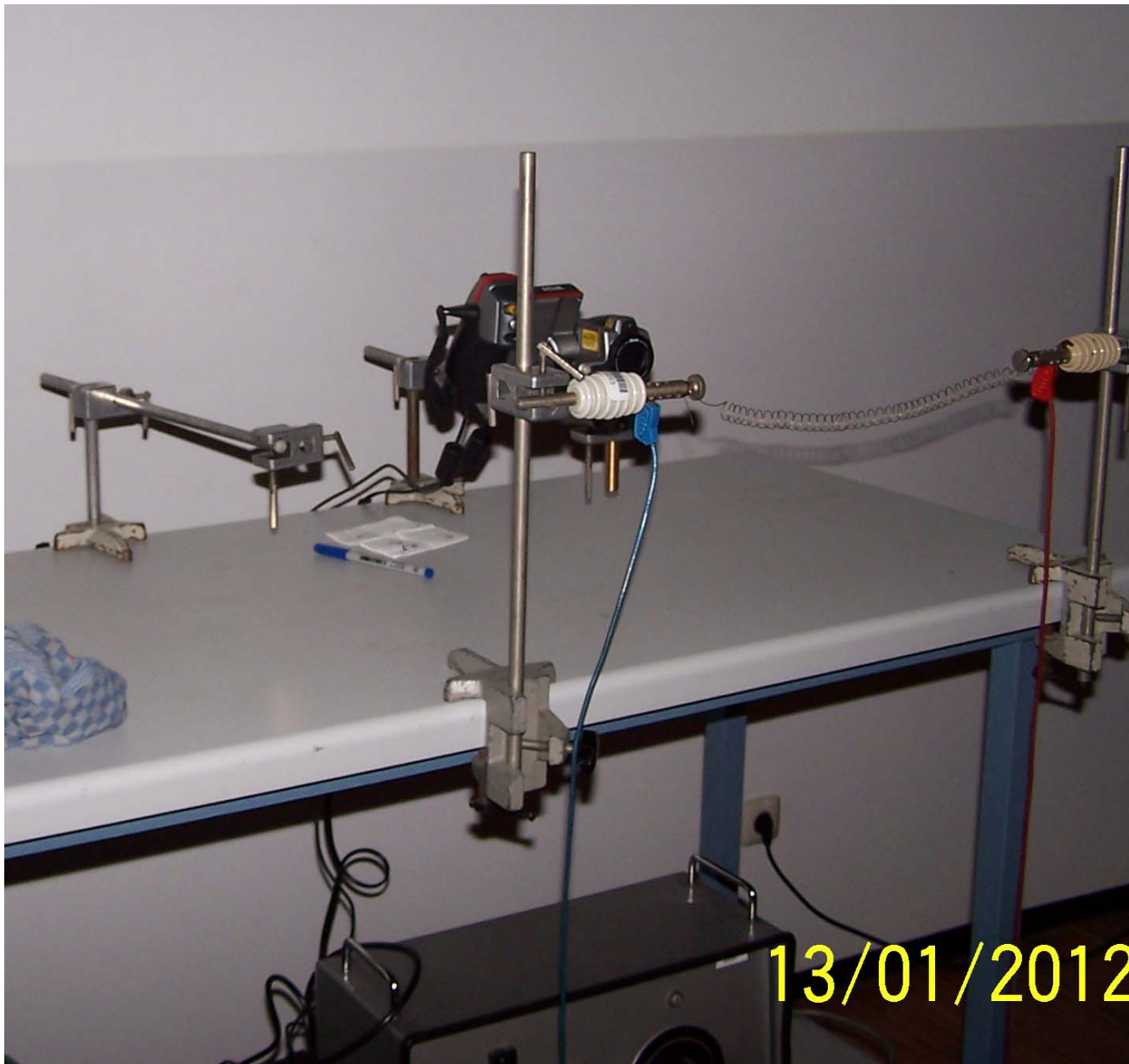
Lichterzeugung, Wärmestrahlung, Leslie-Würfel



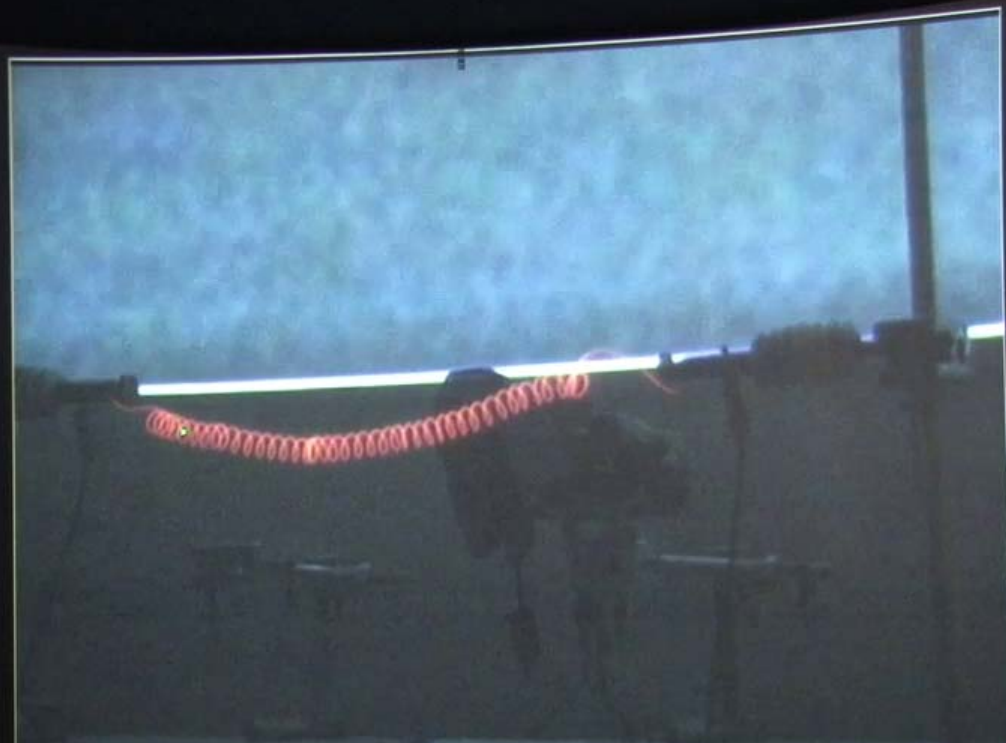
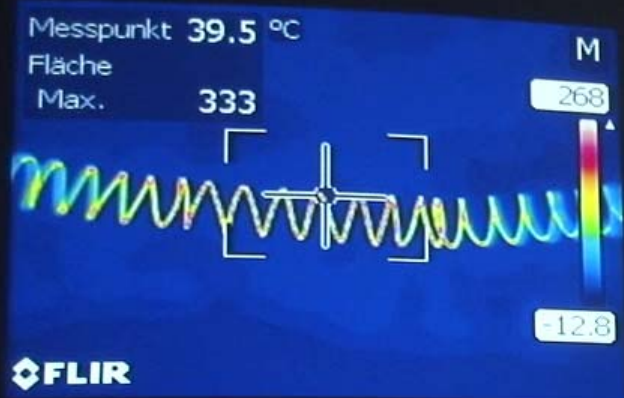
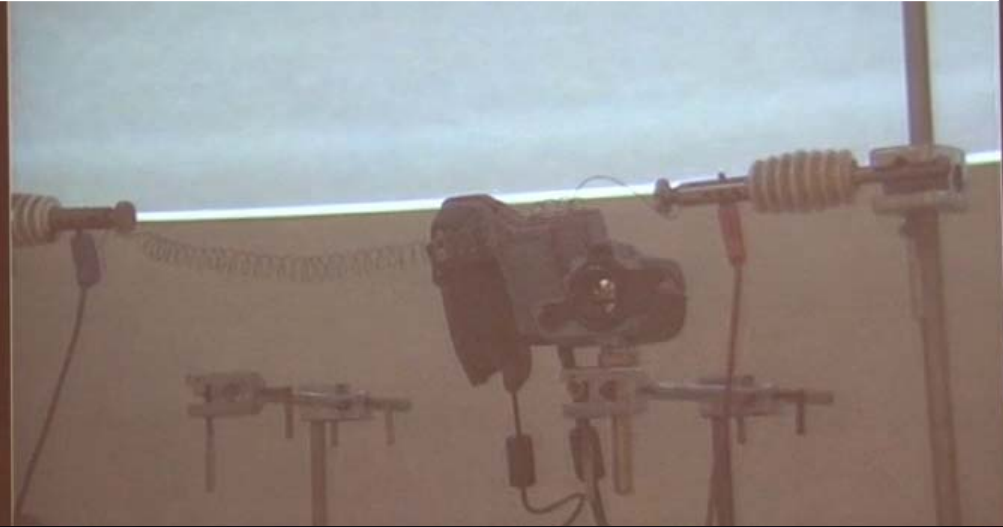
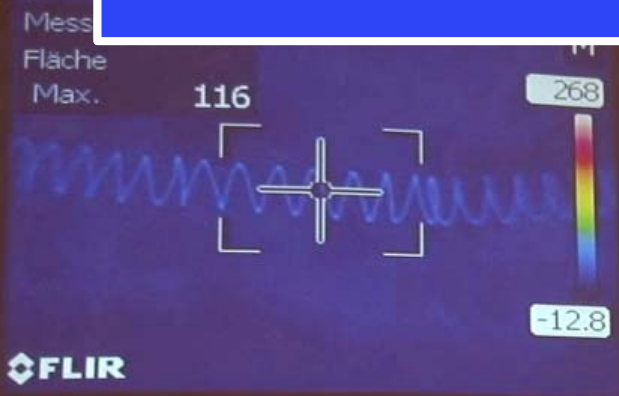
Lichterzeugung, Wärmestrahlung, Lichtmühle



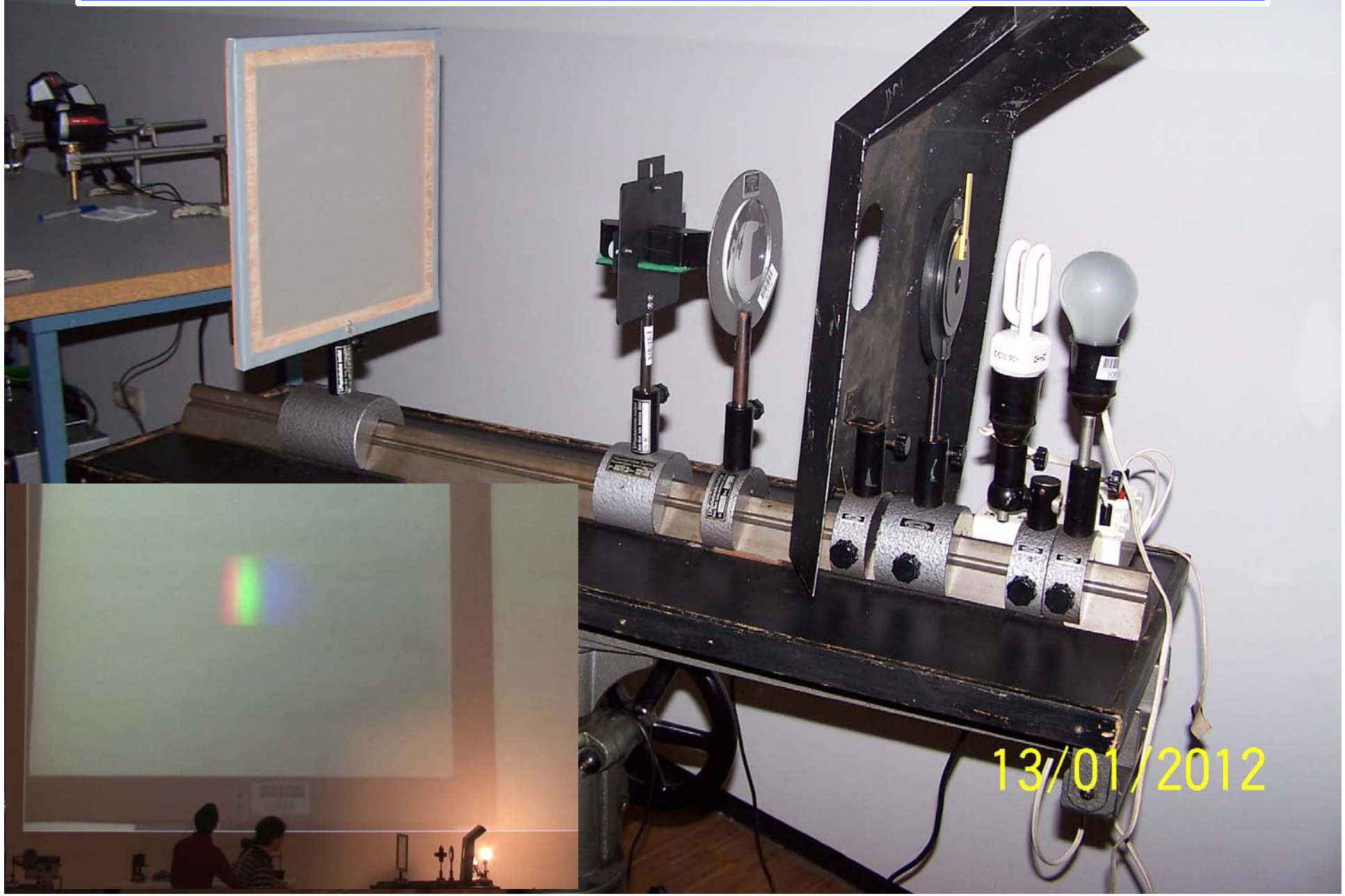
Lichterzeugung, Wärmestrahlung, glühender Draht



Lichterzeugung, Wärmestrahlung, glühender Draht



Lichterzeugung, Wärmestrahlung, Spektrum Glühlampe



Lichterzeugung, Gasentladungslampe

