

# **AMS02 TIM and General Meeting**

Th. Kirn  
I. Phys. Institute RWTH Aachen

June, 21st 2001

## **Radiator**

# Summary

Outgassing

Testbeam

Weight



**LRP 375 BK**

+ CH<sub>2</sub>Cl<sub>2</sub>-cleaning



Organic Chemistry Institute of RWTH-Aachen:  
Development of 10 soxhlett extraction setups for  
360 m<sup>2</sup> of LRP 375 BK

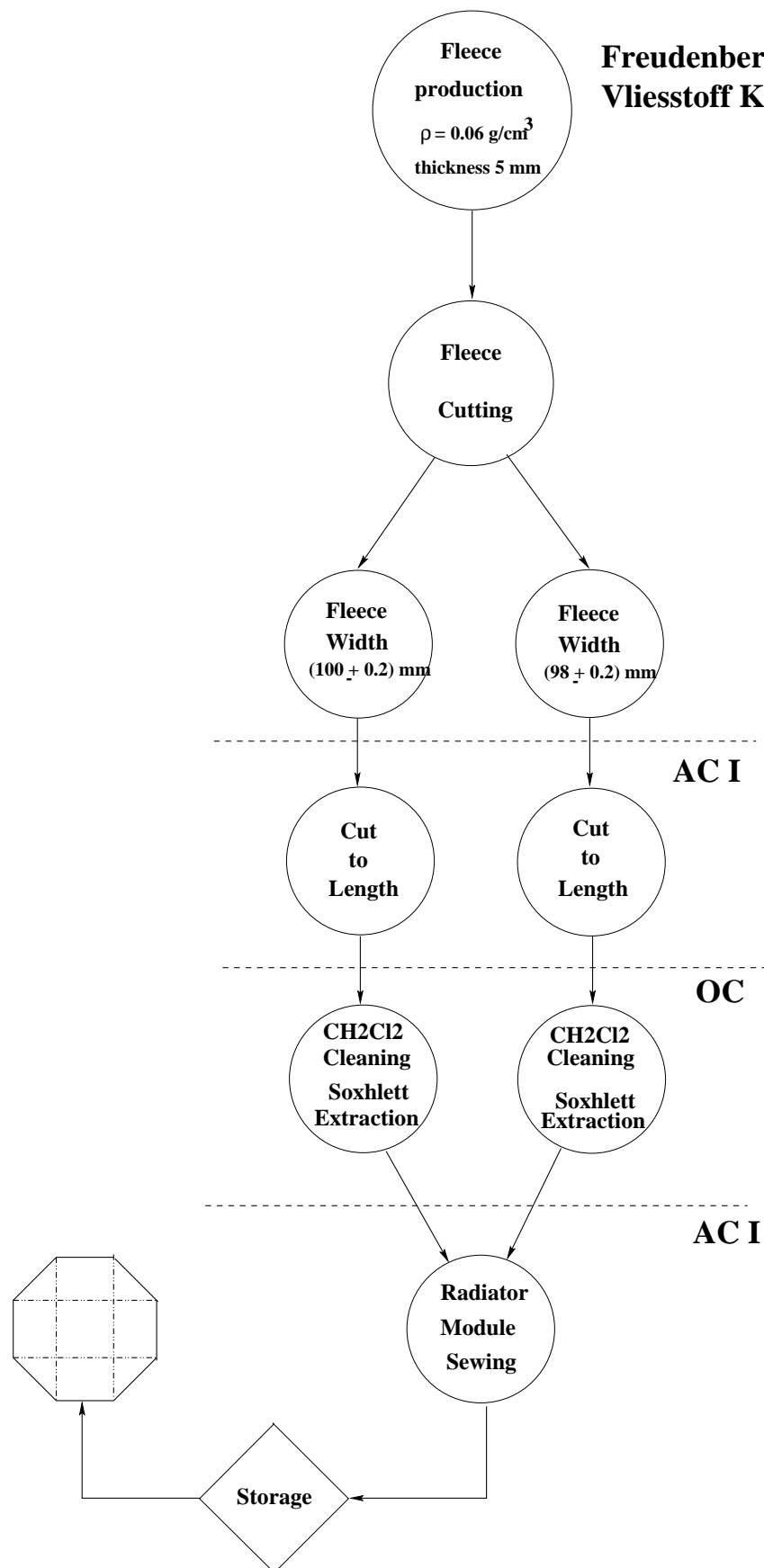
LRP 375 BK vlies (used by ATLAS)

- fibermaterial: Polypropylene
- fiber thickness 10  $\mu\text{m}$
- density: 0.06  $\frac{\text{g}}{\text{cm}^3}$
- prize: 26.00  $\frac{\text{DM}}{\text{m}^2}$
- cleaning with CH<sub>2</sub>Cl<sub>2</sub>

Extraction 3 hours at normal conditions

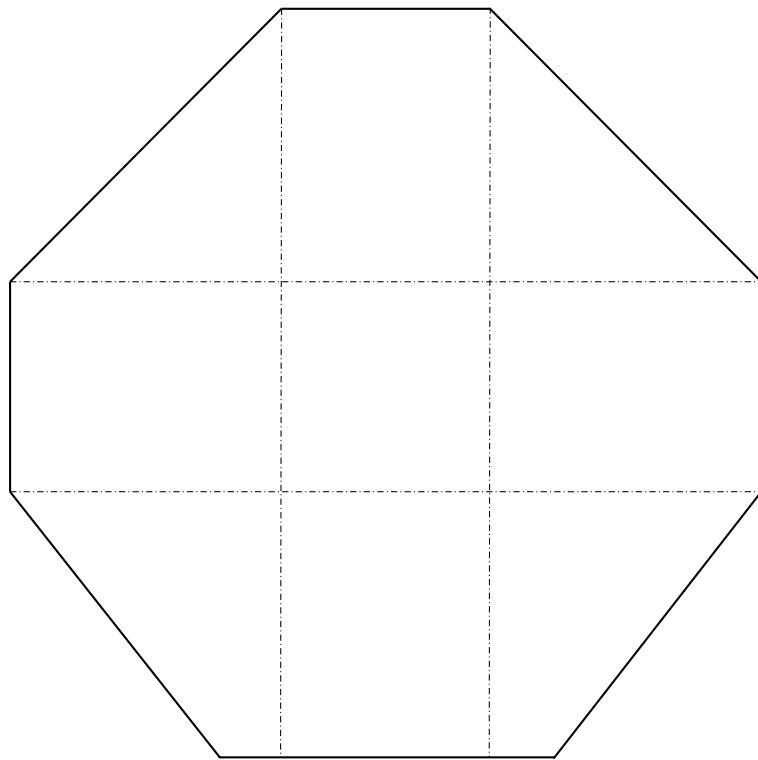
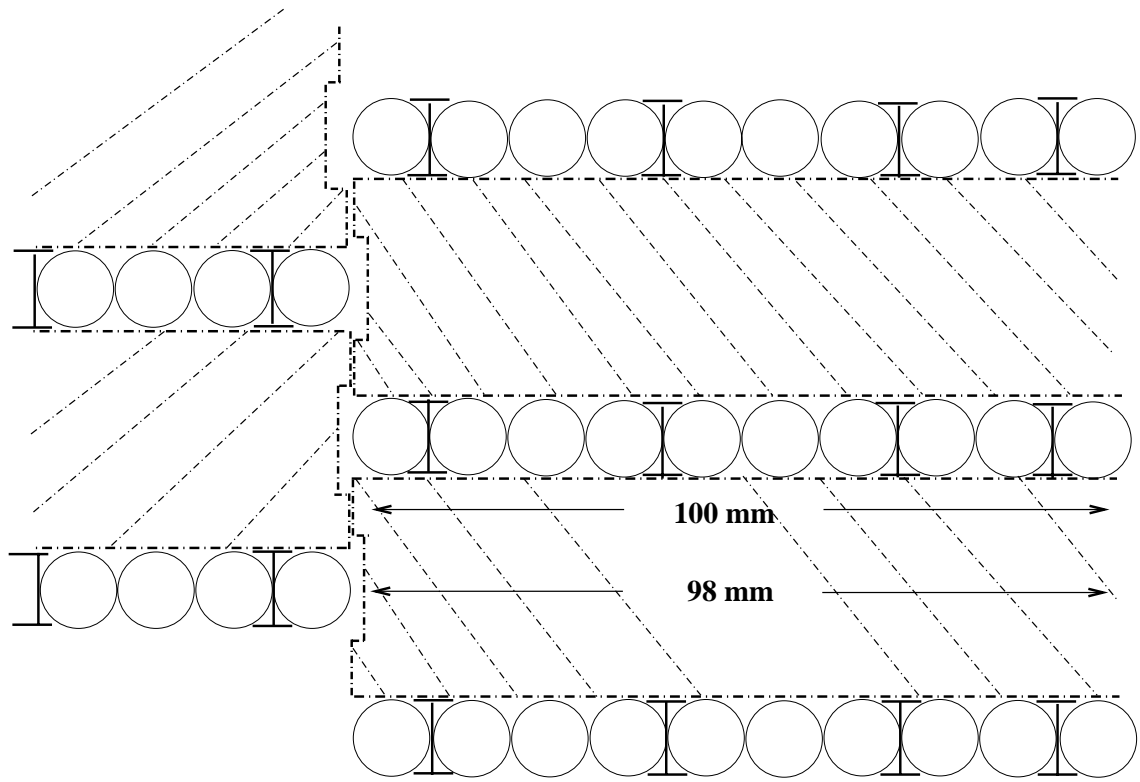
- prize: 100  $\frac{\text{DM}}{\text{m}^2}$

manufacturer: Freudenberg Vliesstoffe KG  
69465 Weinheim, Germany



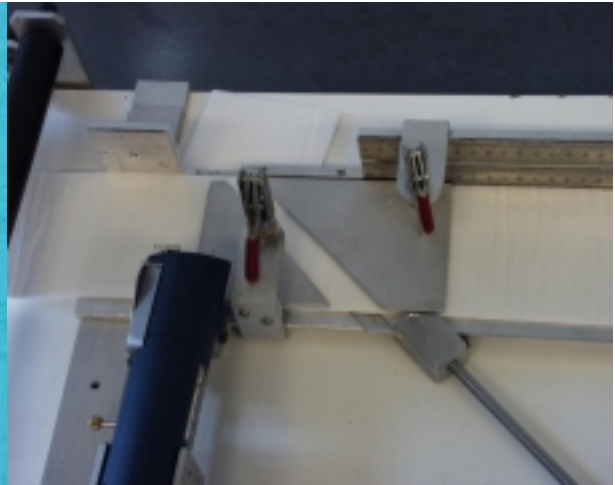
**Fleece is produced**

**Fleece is cutted  
to a width of  
( $100 \pm 0.2$ ) mm  
and  
( $98 \pm 0.2$ ) mm**

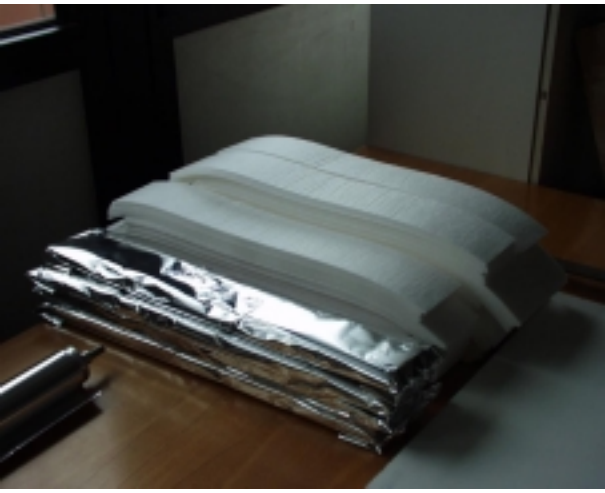
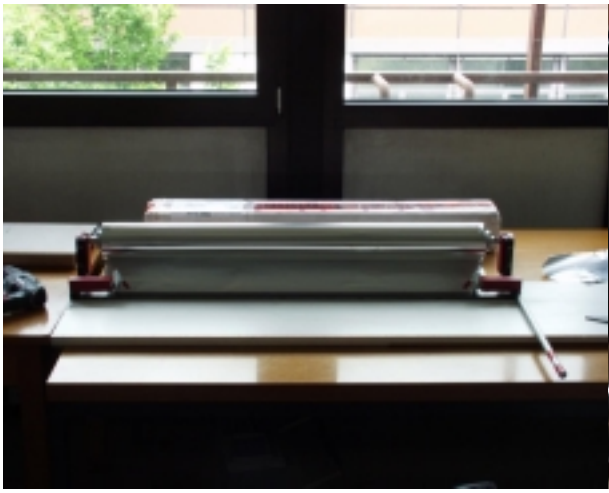


# AC I, Cut to Length

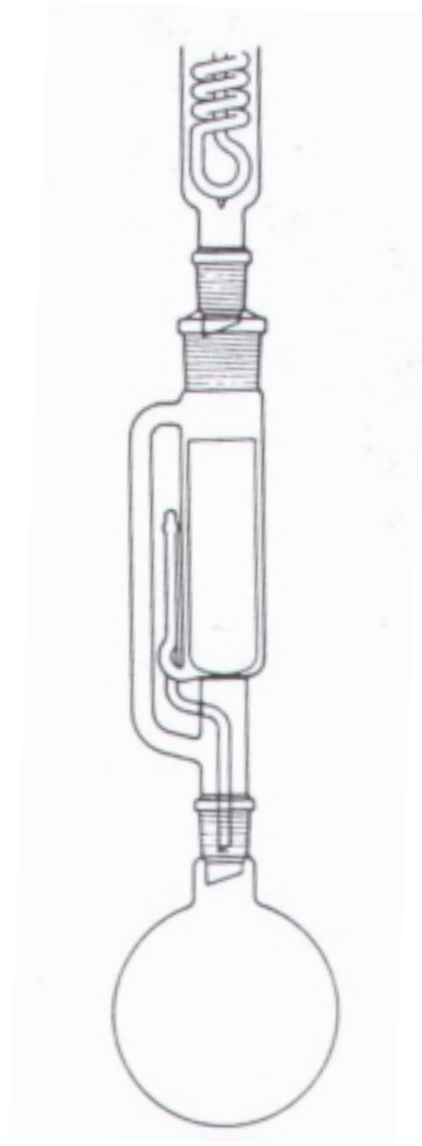








# OC, Soxhlet Extraction



# OC, Soxhlet Extraction



# OC, Soxhlett Extraction

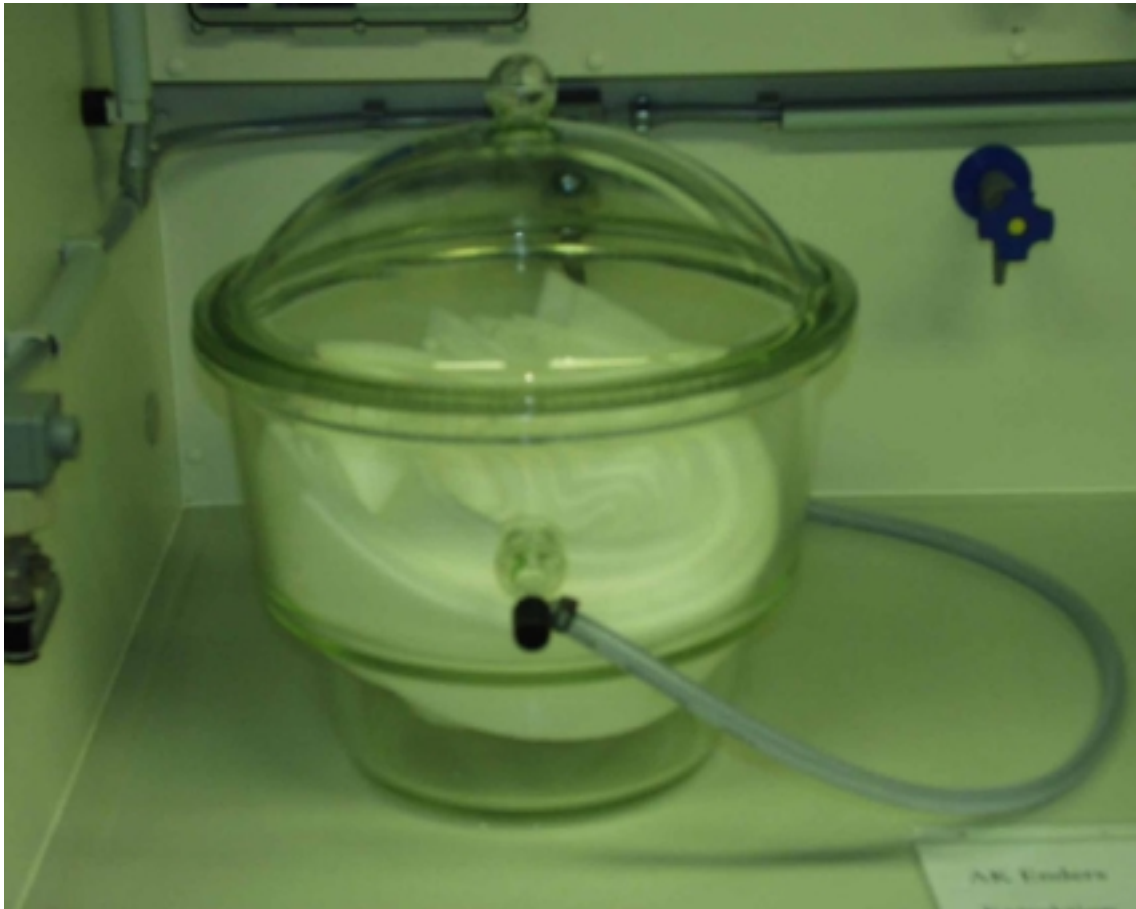




# OC, Soxhlett Extraction



# OC, Soxhlett Extraction



# Sewing



# Conclusion

- Fleece is produced
- Fleece is cut to width
- Fleece is cut to length (3/4)
- Soxhlett extraction started (10 setups, 1000/4200 pieces cleaned)
- Sewing starts on 25th of June
- Radiator module production will be finished  
≈ september